



Installation Guide for McAfee Anti-Virus and Anti-Spyware Module Enterprise 8.0

Contents:

UNINSTALLING EXISTING ANTI-VIRUS APPLICATIONS	2
INSTALLING MCAFEE ANTI-VIRUS + ANTI-SPYWARE 8 ENTERPRISE EDITION.....	3
VERIFYING THAT BOTH VIRUSSCAN AND ANTI-SPYWARE ARE INSTALLED.....	4
UPDATING MCAFEE VIRUSSCAN AND ANTI-SPYWARE	5
RUNNING AN “ON-DEMAND” SCAN ON YOUR COMPUTER.....	5



Installation Guide for McAfee Anti-Virus and Anti-Spyware Module Enterprise 8.0

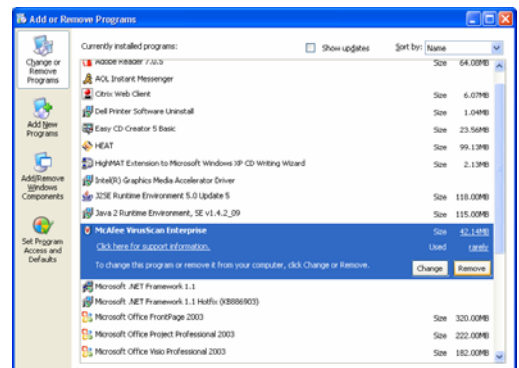
Uninstalling Existing Anti-Virus Applications

You must uninstall any existing anti-virus applications prior to installing McAfee Anti-virus 8 Enterprise Edition. A conflict between the anti-virus applications almost always occurs when there are multiple anti-virus applications on the same system. Failure to properly uninstall all other anti-virus applications may result in an undesirable outcome. Please refer to your anti-virus application's user manual for application-specific instructions. Some common anti-virus applications are:

- Antigen (Sybari Software)
- Avast (ALWIL)
- BitDefender (BitDefender)
- eSafe (Aladdin)
- F-Secure AntiVirus (Data Fellows)
- HouseCall (Trend Micro)
- Internet Security Suite (McAfee)
- InterScan VirusWall (Trend Micro)
- Managed Virus Scan (McAfee)
- Norton AntiVirus (Symantec)
- OfficeScan (Trend Micro)
- PC-cillin (Trend Micro)
- ServerProtect (Trend Micro)
- Sophos Anti-Virus (Sophos)
- Thunderbyte (CERIAS)
- TVD Management Tools (McAfee)
- VFind (CyberSoft)
- Virex (McAfee)
- VirusScan (McAfee)
- WebShield Model 100 (McAfee)
- AVG
- Zone Alarm

To uninstall an application:

1. Click on Start.
2. Click on Control Panel, and then click on Add/Remove Programs.
3. The Add/Remove Programs window will open. Click on the anti-virus application name, then click on Remove.
4. Restart your computer after the anti-virus application is uninstalled.



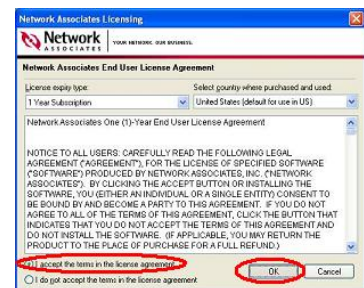
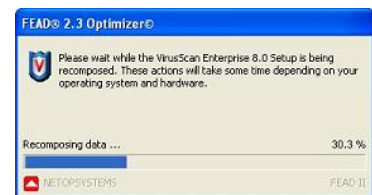
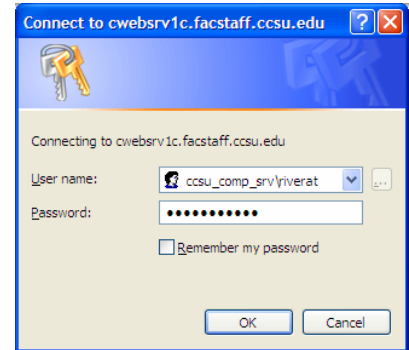


Installation Guide for McAfee Anti-Virus and Anti-Spyware Module Enterprise 8.0

Installing McAfee Anti-Virus + Anti-Spyware 8 Enterprise Edition

1. Open your web browser and navigate to <http://www.ccsu.edu/its/downloads>.
2. Click on the McAfee 8 Enterprise Full Edition link. At the Log in prompt, enter your BlueNet Account prefixed by the domain (ccsu_comp_srv for faculty/staff or ccsu_aca_comp for students) in the username field, enter your password and click on OK.
3. At the File Download prompt, click on Save.
4. Click on the down arrow next to Save in and select a location (the Desktop is recommended to make the file easier to locate), then click on Save.
5. Once the download is complete, locate the downloaded file; double click on the file to start the installation.
6. The Optimizer window will open, displaying a status bar. Please be patient, as this may take a moment depending on your system.
7. At the McAfee® Enterprise 8.0 window, click on Next.
8. Read the Network Associates End User License Agreement, click on “I accept the terms in the license agreement,” then click on OK.
9. From the Select Setup Type screen, click on Typical, then click on Next.
10. From the Ready to install screen, click on Install. The installation will begin.
11. Once the installation is complete, you will receive a confirmation screen indicating that McAfee VirusScan has been successfully installed. From this screen, un-check both “Update Now” and “Run On-Demand Scan”, then click Finish.

NOTE: If you receive a message with “the network driver is installed but...” click OK.






Installation Guide for McAfee Anti-Virus and Anti-Spyware Module Enterprise 8.0

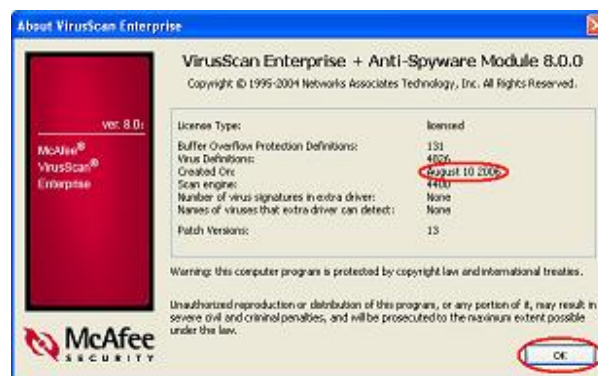
12. Once McAfee Anti-Virus 8 Enterprise finishes installing, McAfee Anti-Spyware Enterprise Module v8.0 will start installing. At the McAfee Anti-Spyware Enterprise Module v8.0 Installer screen, click on Next.
13. A status bar will appear. Please be patient, as this may take a moment depending on your system.

14. Once the installation is complete, you will receive a confirmation screen indicating that McAfee Anti-Spyware has been installed. Click on Finish.



Verifying that Both VirusScan and Anti-Spyware are Installed

1. Right-click the VirusScan icon  located in bottom right of your screen, and click on About VirusScan Enterprise.
2. This window should read VirusScan Enterprise + Anti-Spyware Module 8.0.0. This window is useful because it tells you when McAfee was last updated. Definitions should be updated periodically to keep your computer current and protected against spyware and viruses.




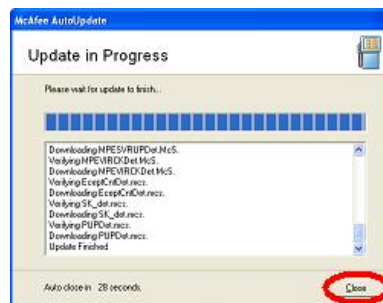
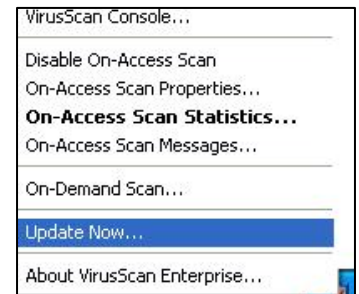


Installation Guide for McAfee Anti-Virus and Anti-Spyware Module Enterprise 8.0


Updating McAfee VirusScan and Anti-Spyware

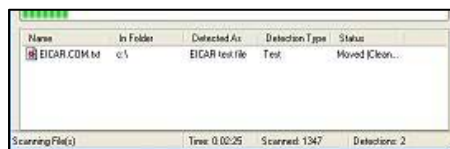
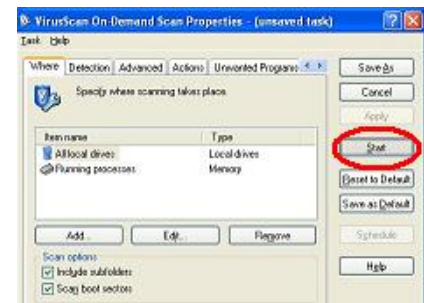
McAfee Anti-Spyware installs as a module of the VirusScan application. Conveniently, both of these tools scan together and update together. To update both McAfee VirusScan and Anti-Spyware:

1. Right-click the VirusScan icon  located in bottom right of your screen, then click on Update Now.
2. The McAfee AutoUpdate screen will display indicating that an update is in progress. Once the update is complete, click on Close (after 30 seconds the window will close automatically).



Running an “On-Demand” Scan on Your Computer

1. Right-click the VirusScan icon  located in bottom right of your screen, then click on On-Demand Scan.
2. The VirusScan On-Demand Scan Properties window provides options to customize the virus scan. Verify that “All local drives” is listed under Item name, then click on Start to begin the virus scan.
3. Any viruses detected during the scan will be listed as they are discovered in a table below the progress bar. Please be patient, as this process may take a while depending on your system.



4. Once the virus scan is complete, review the results, then click on Close.

