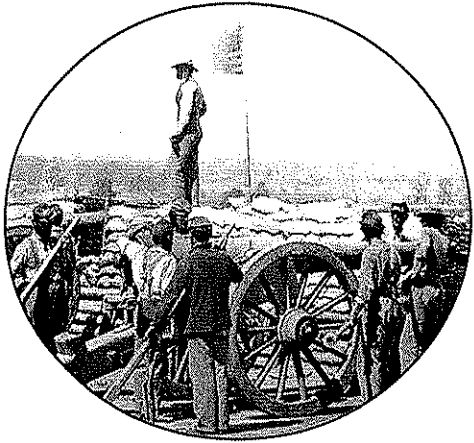


**CIVIL WAR**  
**VOLUNTEER SONS**  
**OF CONNECTICUT**  
**BLAIKIE HINES**



**AMERICAN PATRIOT**  
**PRESS**

## BETHEL

THE POPULATION IN 1860 WAS 1,711 (RANK 86)

THE MOST IMPORTANT DAY  
OF THE CIVIL WAR

**MAY 2, 1863**

CHANCELLORSVILLE, VA

THE SECOND DAY OF THE  
BATTLE

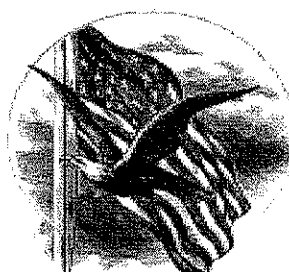
More soldiers credited to Bethel were listed as casualties (5) on this day than on any other day of the war. Two soldiers were wounded, 2 were captured, and 1 was wounded & captured in the 5<sup>TH</sup> and 17<sup>TH</sup> Connecticut. They all survived the war.

The date May 2, 1863 ranks 22<sup>ND</sup> for total casualties (121) (8 killed, 30 wounded, 62 captured, 21 wounded & captured) for the State of Connecticut. All of the casualties were at Chancellorsville.

The Battle of Chancellorsville (May 1-3, 1863) ranks 2<sup>ND</sup> for total casualties (677) for an engagement for the State of Connecticut. The most intense fighting developed on May 3 and Bethel had no casualties on that day.

The Battle of Chancellorsville with 5 total casualties for Bethel was the highest number of casualties for any single engagement of the war for the town.

The Battle of Chancellorsville was an enormous defeat for the more than 70,000 Union soldiers who had moved against the flank and rear of 40,000 Confederate soldiers. Unfortunately, the Union Army had pulled back and had gone on the defensive around Chancellorsville. The Confederate victory was tainted however, by the loss of Confederate Major General "Stonewall" Jackson.



126 MEN CREDITED TO  
BETHEL SERVED IN THE  
FOLLOWING  
CONNECTICUT  
ORGANIZATIONS

<u>REGIMENT</u>	<u>TOTAL</u>
23 <sup>RD</sup>	28 (22%)
17 <sup>TH</sup>	26 (20%)
5 <sup>TH</sup>	13 (10%)
6 <sup>TH</sup>	12 (9%)
7 <sup>TH</sup>	8 (6%)
2 <sup>ND</sup> HEAVY ARTILLERY	6 (6%)
10 <sup>TH</sup>	6 (5%)
11 <sup>TH</sup>	5 (4%)
1 <sup>ST</sup> CAVALRY	5 (4%)
1 <sup>ST</sup> HEAVY ARTILLERY	4 (3%)
9 <sup>TH</sup>	4 (3%)
15 <sup>TH</sup>	4 (3%)
12 <sup>TH</sup>	3 (2%)
13 <sup>TH</sup>	3 (2%)
20 <sup>TH</sup>	3 (2%)
3 <sup>RD</sup>	2 (2%)
12 <sup>TH</sup> BATTALION	2 (2%)
8 <sup>TH</sup>	2 (2%)
29 <sup>TH</sup>	2 (2%)
9 <sup>TH</sup> BATTALION	1
13 <sup>TH</sup> BATTALION	1
28 <sup>TH</sup>	1

7% OF POPULATION

**THREE WERE KILLED**

The first Bethel soldier killed was Sergeant Bethel S. Barnum of Company C, 17<sup>TH</sup> Connecticut. He was killed on July 1, 1863 at the Battle of Gettysburg, PA.

**BETHEL SOLDIERS KILLED**

<u>PLACE</u>	<u>DATE</u>	<u>NO.</u>
Gettysburg, PA (17 <sup>TH</sup> )	7/1/63	1
Gettysburg, PA (17 <sup>TH</sup> )	7/2/63	1
Olustee, FL (7 <sup>TH</sup> )	2/20/64	1

**SIXTEEN WERE CAPTURED**

Four Bethel soldiers died in captivity. Two died in Andersonville Prison, GA and two died in Salisbury, NC.

**BETHEL CAPTURED  
\* (4) DIED IN CAPTIVITY**

<u>PLACE</u>	<u>DATE</u>	<u>NO.</u>
Cedar Mountain, VA (5 <sup>TH</sup> )	8/9/62	2
Chancellorsville, VA (5,17 <sup>TH</sup> ) (1 WOUNDED)	5/2/63	3
Brashear City, LA (23 <sup>RD</sup> )	6/23/63	3
Drewry's Bluff, VA (6,7 <sup>TH</sup> ) *2	5/16/64	3
Cedar Creek, VA (2HA) *2 (2 WOUNDED)	10/19/64	2
Dunn's Lake, FL (17 <sup>TH</sup> )	2/5/65	2
Kinston, NC	3/8/65	1



**TOTAL BETHEL  
CASUALTIES**

<b>DIED</b>	<b>15</b>	<b>12%</b>
<b>KILLED</b>	<b>3</b>	<b>2%</b>
<b>WOUNDED</b>	<b>22</b>	<b>17%</b>
<b>CAPTURED</b>	<b>16</b>	<b>13%</b>
<b>DESERTED</b>	<b>10</b>	<b>8%</b>



**TWENTY-TWO WERE  
WOUNDED**

The first Bethel soldier wounded was Private Joseph Brotherton of Co. C, 11<sup>TH</sup> Connecticut. He was wounded at New Bern, NC on March 14, 1862 and recovered from his wound. Two Bethel soldiers died from a wound received in the war.

**BETHEL WOUNDED  
\* (2) DIED FROM WOUNDS**

<u>PLACE</u>	<u>DATE</u>	<u>NO.</u>
New Bern, NC (11 <sup>TH</sup> )	3/14/62	1
Cedar Mountain, VA (5 <sup>TH</sup> )	8/9/62	1
Antictam, MD (11 <sup>TH</sup> )	9/17/62	1
Pocotaligo, SC (7 <sup>TH</sup> )	10/22/62	1
Irish Bend, LA (13 <sup>TH</sup> )	4/14/63	1
Chancellorsville, VA (5,17 <sup>TH</sup> )	5/2/63	2
Gettysburg, PA (17 <sup>TH</sup> )	7/1/63	2
Gettysburg, PA (17 <sup>TH</sup> )	7/3/63	1
Berwick, LA (23 <sup>RD</sup> )	6/12/63	1
Drewry's Bluff, VA (6 <sup>TH</sup> )	5/16/64	1
Cold Harbor, VA (2HA)	6/1/64	1
Cold Harbor, VA (11 <sup>TH</sup> )	6/3/64	1
Petersburg, VA (7 <sup>TH</sup> ) *	6/6/64	1
Deep Bottom, VA (6,10 <sup>TH</sup> )	8/14/64	2
Newmarket Road, VA (6 <sup>TH</sup> )	9/1/64	1
Winchester, VA (2HA)	9/19/64	1
Darbytown Road, VA (10 <sup>TH</sup> )*	10/13/64	1
Goldsboro, NC (5 <sup>TH</sup> )	3/19/65	1
Atlanta, GA (13 <sup>TH</sup> )	6/1/65	1